

# FRIENDS OF ABLE NEWSLETTER

WWW.FRIENDSOFABLECEPROJECT.IE



Wednesday  
10 July 2024



## FRIENDS OF ABLE

*A better life for everyone!*

## About Us

Friends of ABLE Community Employment Scheme strives to promote the abilities of its participants, give opportunities to train for a chosen career path and provide support in the search for employment.

The CE Scheme gives participants the time to demonstrate to potential employers their commitment to full employment while contributing to the fabric of the community, the spirit inherent in all Kerry communities and promote the volunteer ethos that is the structure behind all Irish community groups.

Friends of ABLE demonstrates that if one achieves their full potential, this will in turn ensure equal opportunities and full participation in all aspects of the lives of its participants. With the support of the sponsoring committee we aim to promote a better quality of life for all people in the community, we have an expert awareness of the barriers faced by people in long term unemployment and have adopted a broad and realistic method towards breaking these barriers.

**We are involved with various projects and community partners in Tralee.**  
**Learn more about - Pages 5 & 6**

## News

### **Austin Stacks:**

Join us in saving the date for the upcoming Summer Camp. - [Page 2](#)

### **Austin Stacks:**

Join the annual "British Open Golf Challenge" fundraiser 2024. - [Page 2](#)

### **Tralee Tidy Towns CE Scheme:**

The team are working hard at improving the town's overall appearance. - [Page 2](#)

### **Adapt Kerry Charity Shop:**

Don't miss the chance to explore the store and discover great deal. - [Page 3](#)

### **Oxfam Tralee:**

Be sure to stop by the store and discover a wide range of fantastic products. - [Page 3](#)

### **Rathass Cemetery CE Scheme:**

Getting the Rathass grounds ready for the upcoming annual mass. - [Page 3](#)

### **Tralee Chamber Alliance:**

Book your place for the upcoming 2024 Summer BBQ in Fenit. - [Page 4](#)

### **Friends Of Able:**

Thanks to Kerry County Council for their generous funding. - [Page 4](#)

## Austin Stacks

Save the date as the Austin Stacks Club Summer Camp approaches. Running from Tuesday, August 6th to Saturday, August 10th, this camp will be held daily from 9:30am to 1:00pm in Connolly Park.

Our camp promises a week of sports, games, and outdoor fun. Participants will engage in activities designed to improve athletic skills, build teamwork, and have plenty of fun.

Pricing details for the camp will be confirmed in the coming weeks. We are committed to offering a great experience for all attendees.

Don't miss this chance to join the Austin Stacks community, make new friends, and enjoy a memorable week. We are looking forward to seeing you there.



## Austin Stacks



Join us for the Austin Stacks annual "British Open Golf Challenge" fundraiser which will be running from the 18th to 21st July.

Support us by participating in this exciting annual event, whether you're an avid golfer or a casual enthusiast don't miss this opportunity to contribute to a great cause while enjoying days of fun and friendly competition.

Tickets available at the club or sign-up online today to take part in the event.

## Tralee Tidy Towns CE Scheme



The members of Tralee Tidy Towns are committed to maintaining cleanliness and tidiness in the town. This July, they have been putting in extra effort, working diligently to enhance the environment for all residents.

Their tireless dedication ensures that Tralee remains attractive and meets the town's high standards, all while preserving the local environment. They consistently strive to improve the surroundings, making Tralee a better place for everyone.



**FRIENDS OF ABLE**  
*A better life for everyone!*



## Adapt Kerry Charity Shop

Explore the offerings at Adapt Kerry Charity Shop this July by browsing their in-store selection. New stock awaits alongside items from their June window display, all available for purchase starting July 2nd at 9:30am.

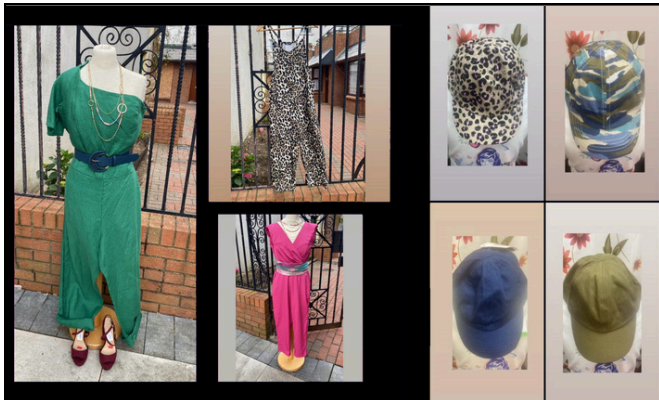
Please be aware that items from their window display cannot be reserved or held.

Whether you're aiming for a stylish or casual look, delve into their diverse in-store collection featuring esteemed brands such as Tommy Hilfiger, Michael Kors, and Levi's. You'll be sure to find something to suit every taste and occasion.

Located at Matt Talbot Road, Tralee, Kerry, the Adapt Charity store welcomes visitors Monday through Friday from 9:30am to 5:00pm, and Saturday from 10:00am to 2:00pm.



## Oxfam Tralee



Looking to update your wardrobe for July? Discover new styles in-store today!

Explore their extensive collection of women's, men's, and children's clothing, all offered at unbeatable prices. In addition to clothing, you'll find a diverse selection of books, CDs, videos, and a variety of fashion accessories like hats, scarves, and sunglasses.

The Oxfam Tralee store is open Monday to Saturday from 9:30am to 5:30pm, providing plenty of time to shop and find great deals.

## Rathass Cemetery CE Scheme



The team at Rathass Cemetery, assisted by the Tralee Tidy Towns group, have been hard at work preparing for the annual mass.

Their combined efforts ensure that the cemetery is pristine and ready for the event, showcasing the community's commitment to honouring their departed loved ones.

This collaboration highlights the spirit of unity and dedication within the community as they come together for this significant occasion.

Enjoying the newsletter?

Why not share it with friends and colleagues!

## Tralee Chamber Alliance

Tralee Chamber is thrilled to announce the return of its much-anticipated 2024 Summer BBQ, scheduled to take place at the Tankard Bar & Restaurant in Fenit on Thursday, July 18th, from 7:00pm to 9:00pm.

This year's BBQ is open to all Tralee Chamber members, partners, staff, and volunteers. It's an excellent opportunity for the community to come together, socialize, and network in a relaxed and enjoyable atmosphere. Attendees can look forward to an evening filled with delicious food and refreshments, offering a perfect setting to unwind.

Advance registration is required. Please email [news@tralee.ie](mailto:news@tralee.ie) by Friday, July 12th to secure your spot. We look forward to seeing everyone there for an evening of fun.



## Available Job Positions We're Hiring

- **Maintenance Person**  
Enable Ireland Children's Service Tralee
- **Maintenance/Caretaker**  
Mount Eagle Lodge Tralee
- **Environmental Worker**  
Tralee Tidy Towns
- **Community Link Worker - Killarney**  
Kerry Travellers Health Community Development Project
- **Bus Driver**  
Enable Ireland Adult Services Tralee
- **Building Maintenance**  
Adapt Women's Refuge Tralee
- **Administrator/Care Assistant**  
Enable Ireland Adult Services Tralee
- **More vacancies can be found on our Facebook page**  
[www.facebook.com/friendsofable](http://www.facebook.com/friendsofable)

SEND YOUR CV TO [ANNE@FRIENDSOFABLECEPROJECT.IE](mailto:ANNE@FRIENDSOFABLECEPROJECT.IE)

## Friends Of Able



Friends of Able would like to extend our gratitude to the Kerry County Council Enhancement Programme 2024 for their generous funding of two leaf blowers for the Tralee Tidy Towns CE Scheme.

This support will significantly enhance our efforts in maintaining and beautifying the town, contributing to a cleaner and more vibrant community. Your support is greatly appreciated and will have a meaningful impact in our project.



**FRIENDS OF ABLE**  
*A better life for everyone!*



### Kerry Parents & Friends Association



Established in 1973 to support families of people with an intellectual disability and the Franciscan Sisters of the Divine Motherhood in their work at St Mary of the Angels, Beaufort near Killarney. The Association became a service provider in its own right in 1978, in response to an urgent need for services for adults with an intellectual disability in Kerry. KPFA now provides Residential and Day Services, Training for Life, Community Integration Programmes and Individualised Services for more than 200 adults, in various locations throughout Kerry. Being a member of the National Federation of Voluntary Bodies it works in partnership with the HSE to provide quality services.

### Oxfam Tralee



Oxfam has been located near the popular town square since 1998, and has been operating for over 24 years with a great selection of clothes for women, men, and children, along with music, books, jewellery, and bric-a-brac. The Oxfam store always accepts donations of quality undamaged items that others no longer want. Volunteers who join the Oxfam team are involved in the work that takes place within the heart of the shop which is a hive of activity with lots of chats, opportunities to meet new people, and learn new skills while having plenty of fun.

### Enable Ireland - Adult and Children Services



Enable Ireland works in partnership with those who use their services to achieve maximum independence, choice and inclusion in their communities and focuses on the person, not the disability. They believe that access, inclusion and equality are basic rights for all people and assert that society must recognise and accommodate individual needs.

*“All of us have a responsibility to adapt our world for the person with a disability rather than demand that that person adapts to us”*

John O’Sullivan  
CEO, Enable Ireland

### Rathass Cemetery CE Scheme



Rathass / Ratass cemetery, the largest graveyard in Kerry and the main burial place for Tralee, dates from the early medieval Christian period, and the Ogham Stone in the church suggests the area had significance from an even earlier period. Today Rathass cemetery is maintained under the Rathass Cemetery CE Scheme which works alongside the Kerry County Council to help keep the cemetery clean, litter free and presentable to the towns standards. The scheme participants will complete industry standard training in manual handling, safe pass, pesticide distribution and several other environmental related courses.

### Tralee Tidy Towns



The Tralee Tidy Towns group work alongside the Kerry County Council and other groups with the ambition to keep the town of Tralee and its’ environs clean, litter free and presentable to the towns standards. The group is made up of people who are committed to making Tralee a better place for all. They carry out general maintenance of the town on a daily basis covering various areas of the town. Main activities include but are not restricted to painting, litter picking, etc. They aim to ensure that the town’s position in Tidy Towns is improved. Scheme participants will complete industry standard training in manual handling, safe pass and several other related courses.

### Tralee Chamber Alliance



Tralee Chamber Alliance is to put more emphasis on promoting the business community in the town with a view to attract more jobs to Tralee. The core principal of the Alliance is to promote the growth of the town industrially and to foster pride in the town among the community of Tralee. Its board is made up of twenty business and community leaders of the town, with sectors including - Town Image & Community Pride, Retail, Parking and Planning, Enterprise & Employment and the Chief Executive heading up the Tourism & Marketing Sector. They aim to develop tourism, a positive attitude and pride within the town, and present a positive picture of Tralee.

Follow us on our social networks



[www.facebook.com/friendsofable](https://www.facebook.com/friendsofable)

[www.instagram.com/friendsofable](https://www.instagram.com/friendsofable)

[www.friendsofableproject.ie](http://www.friendsofableproject.ie)

### Kerry Travellers Health & Community Development Project



It has been established since 1997 and is based on an acknowledgement of the separate and distinct culture of the Traveller Community. Participants working within the project work as either a community link worker or as an information officer. These officers are tasked with setting up group meetings within the Travelling Community, help improve integration into full time work or education, and making sure that members of the Travelling Community have full knowledge of all activities and events that are taking place within the project. They are also involved with working closely with the project Administrator as well with helping with the running of the office.

### Adapt Kerry - Women's Refuge and Support Services



Established in the early 1990's by a group of parents in Tralee who were supporting their own adult daughters through the issue of Domestic Violence and were concerned about the impact of this trauma and the absence of a dedicated domestic violence service in the County. This local group fundraised for the construction of a refuge in Tralee to provide a place of safety for women and children in Kerry whose lives were affected by Domestic Violence. The local group was officially incorporated in 1992 as ADAPT Kerry Limited and opened its doors to its first families in 1996. Their aims are to offer support to female victims and their children, and to raise awareness of the issue.

### Tralee Community Bridge Club



The Tralee Bridge Club provides an avenue for the bridge lovers to come together and participate in either a competitive or fun environment. The group meets most week nights and is open to all ages. The only pre-requisite to joining in is that you must love bridge! The participant will follow the ethos of providing a fun but competitive environment for people to meet and play a game they love.

### Tralee Pitch and Putt Club



It was established in 1969 and it has provided an avenue for people who are passionate about the game to come together in a relaxing atmosphere. The Tralee Pitch and Putt Club is located in a quiet area, far from the hustle and bustle of the town and is open to every member of the public. The Club has membership options available, and also offers green fee rates for tourists, visitors or those who just only play it once in a while. Scheme participants will all receive extensive training in course management, landscape caretaking and maintenance including all relevant certification in health and safety requirements. Guidance in event and venue management will also be provided.

### Austin Stacks GAA Club



Austin Stacks is an urban GAA Club in the heart of Tralee which caters for nearly 40 teams and 500 members. The Complex located in Connolly Park is in need of constant maintenance and the participants will be trained in Field maintenance, event management and will take part in the various training schemes run by ABLE which will allow them to round out their certification with regards to green keeping, general maintenance and caretaking. This partnership with a local volunteer organisation shows the community integration which is the foundation of the success of Community Employment.

JOIN FRIENDS OF ABLE TODAY

## WE ARE HIRING!

---



**FRIENDS OF ABLE**  
*A better life for everyone!*

---

SEND YOUR CV TO  
[ANNE@FRIENDSOFABLEPROJECT.IE](mailto:ANNE@FRIENDSOFABLEPROJECT.IE)

### Contact Us

Email: [anne@friendsofableproject.ie](mailto:anne@friendsofableproject.ie)

Tel: (066) 712 0455 / (086) 124 7644

Address: Lime Tree House, Killeen, Oakpark, Tralee, Co. Kerry, V92 VHY2



**FRIENDS OF ABLE**  
*A better life for everyone!*